

Rafael Escolá, Founder of IDOM

IDOM was founded in Bilbao in 1957, with the aim of providing professional independent engineering services. A combination of the evolution of the market, the changing needs of our clients and the service-oriented approach of IDOM, led the firm into a process of continuous growth and diversification.

IDOM is currently a multidisciplinary group, leader in the fields of engineering, architecture and consulting, with activities carried out by more than 1,400 professionals, working from 20 different offices, across 9 countries and 3 continents

Philosophy

IDOM prides itself on excellent customer service, with its main focus being the client.

Other important strategies such as technological innovation, the introduction of quality systems and expansion into new fields of activity, are always considered by IDOM to be tools designed to satisfy the genuine needs of its clients.

We try to maintain the philosophy that the individual is the basis of the company and the best guarantee of good service and. Consequently, we pay considerable attention to the personal professional development of all our staff.

We believe that professional independence with regard to any entrepreneurial or financial group is another one of the factors that contributes to the continual improvement of the service we offer, and we believe that this independence has made IDOM a benchmark company in its field of activity.

In conclusion, IDOM's intention is to actively contribute to the evolution of each of its different specialities, by participating in various projects and using them to create valuable, long-lasting relationships.

Staff

IDOM's leading position in the market is reflected by our 1,400 strong workforce whose professional excellence has gained us this position.

For this reason, the basic core of the firm is made up of qualified professionals who can respond to the genuine needs of our clients.

From the legal point of view, IDOM is a professional association that operates through companies, either PLC or limited, based in the various geographical areas we work in. The ownership of the firm is shared between more than 200 professionals who have taken on the position of associates.

IDOM promotes and values the following amongst all of its members: professional qualifications to provide a quality service, effectiveness when it comes to providing solutions and a positive attitude towards personal development and learning, and effectiveness when it comes to providing solutions. All of this falls within a framework of trust in people and respect for their professional freedom:

Our team is made up of University Graduates and Diploma-holders who are:

Industrial engineers / Architects / Civil engineers / Aeronautical engineers / Telecommunications engineers / Economists / IT specialists / Agricultural engineers / Chemists / Biologists / Physicists / Lawyers / Geologists / Others

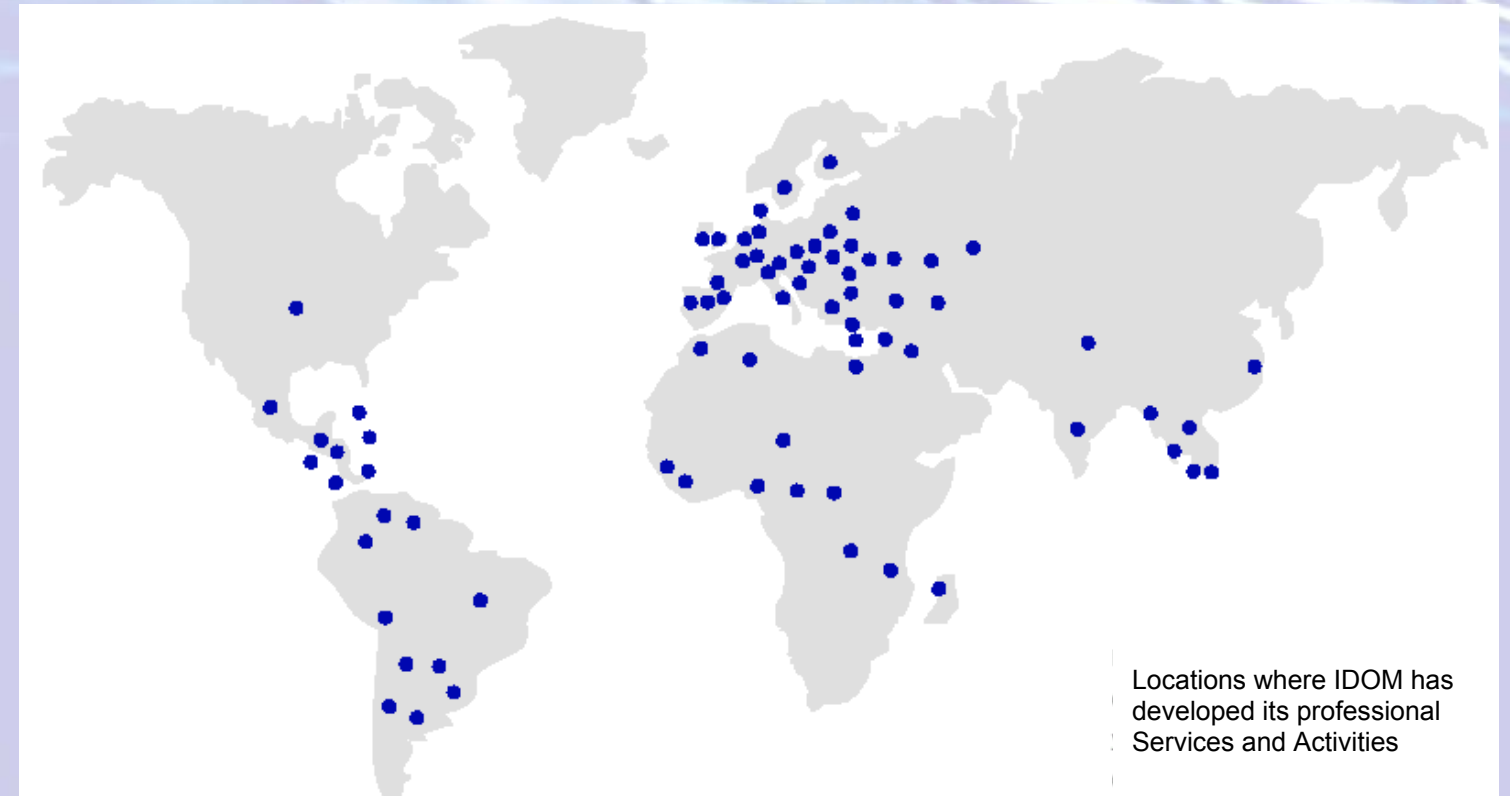


	2003	%
Graduates	821	56,5%
Diploma Holders	256	17,5%
Technical Staff	228	16%
Administrative Staff	143	10%
TOTAL	1.448	100%

Activity

IDOM is a leader in the field of professional services in engineering, architecture and consulting. For over four decades it has provided services for more than 4,000 clients and taken part in 15,000 projects in four continents.

IDOM carries out a wide variety of functions, ranging from preliminary and definition studies, to integrated "turn-key" services, and through project development and integrated project management.



International

The process of internationalisation is a strategy we place great emphasis on, and is based on the solid position of IDOM in the Spanish market and on the perception that the markets will continue in their trend towards globalisation.

IDOM has 20 project development offices in 9 countries, and has managed projects in more than 30, using its own methodologies.

We have a particularly active presence in bodies which have multilateral financing.

Professional Services

IDOM's professional services cover almost all engineering sectors: industrial plants, processing plants, energy, large infrastructures, telecommunications and environment.

IDOM offers all the engineering services necessary to carry out any industrial project: from the initial concept, whose feasibility is analysed; to entry onto the production line, using the most advanced technologies in design and performance control.

In IDOM, each project is mapped out with the client who, through a program of periodical meetings, obtains the necessary information to make the right decisions. The team which carries out the project is assisted by the different technical and functional areas and, in certain cases, may call on people from outside the company.



Felipe Prósper, President

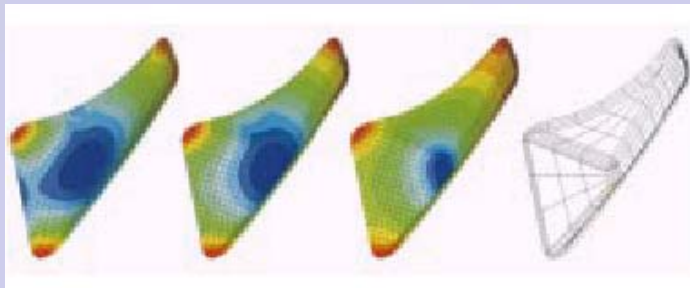
Fernando Querejeta, General Manager



Studies & Consulting

The area of consulting offers advanced solutions, based on technological processes, which optimise decisions in investment, management and organizational change, in the industrial and service sectors.

IDOM is a leader in regional and urban development studies, specializing in investment and in the implementation of administrative and logistical improvements, and internationally recognized in the management of multilateral funds and provides, amongst other services, restructuring and privatization, business strategy, marketing and industrial promotion, socio-economic impact and feasibility studies.



Advanced Design and Analysis

Disciplines IDOM/ADA experience extends over a wide range of disciplines such as:

Technology Development & Implementation:

Development of procedures and methods for complex engineering problems, and Implementation of advanced computer simulation technology.



Design Ensemble

Multi-field engineering for non-conventional projects. Advanced state-of-the-art capabilities. Processes basic technology research to full manufacturing solutions.

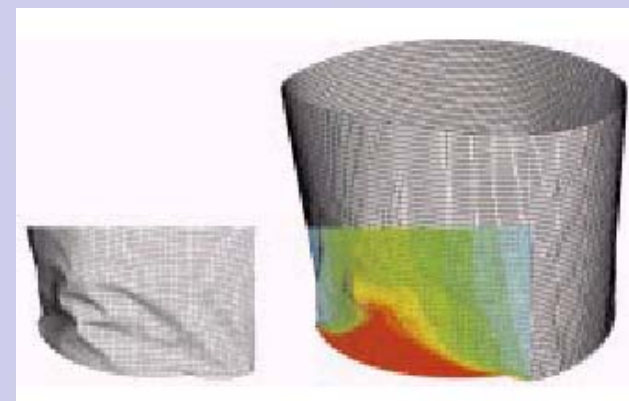
Project Management for aerospace.

Joint ventures, Specific Studies & Reports, Specific answers to particular problems, Application of advanced analysis & simulation of engineering practical problems.

Component integrity and life prediction. Feasibility analysis of critical construction processes. Structural/mechanical pathology analysis. Failure & forensic engineering. Seismic design and analysis. Safety analysis (power plants, transport, safety systems).

Innovation

As far as we are concerned, innovation means the creation of new products and services; it also means the continual evaluation of our own methods of management and decision-making; Above all it signifies the constant improvement of our personal skills.



IDOM works with different universities in developing management programs, and cooperates with other companies and associations in R+D projects.

IDOM is proud to have the ISO 9001 and ISO 14001 certificates awarded by "Lloyd's Register Quality Assurance".

OTHER TECHNICAL AREAS

IDOM also works too in other fields that are less relevant to GNSS projects:

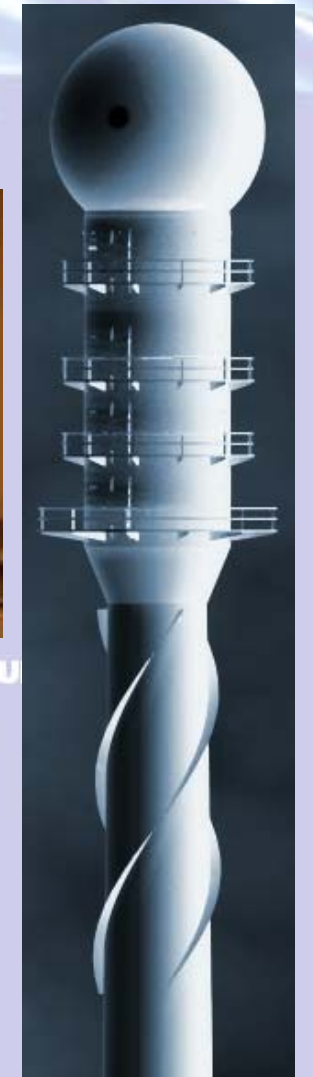
- Architecture and Building • Civil Engineering • Energy • Environment • Industrial Engineering • Chemistry and Petrochemistry • Project Management • Turn-Key Projects

IDOM USES STANDARD AND ADVANCED APPLICATIONS WITH CUSTOMER'S SATISFACTION BEING THE UTMOST IMPORTANCE FOR US

Telecommunications and Systems

IDOM offers his expertise on several implicated disciplines:

- TC Service Providers
- Information Systems for Transportation
- Technological Consulting
- Systems
- Security & Safety



Land Management

IDOM Land Management area offers the following services:

- High Precision Land Surveying
- Cadastre data collection & Analysis
- Cartography data collection
- Satellite Orthophotogrametry
- Assets and Fleet tracking & Management
- GIS development
- 3D Graphical Solutions





ENGINEERING, ARCHITECTURE AND CONSULTING